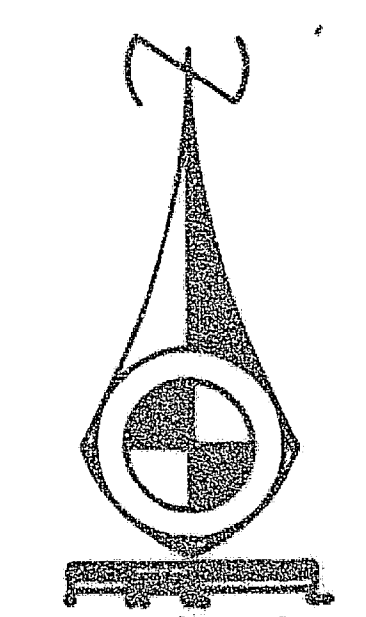
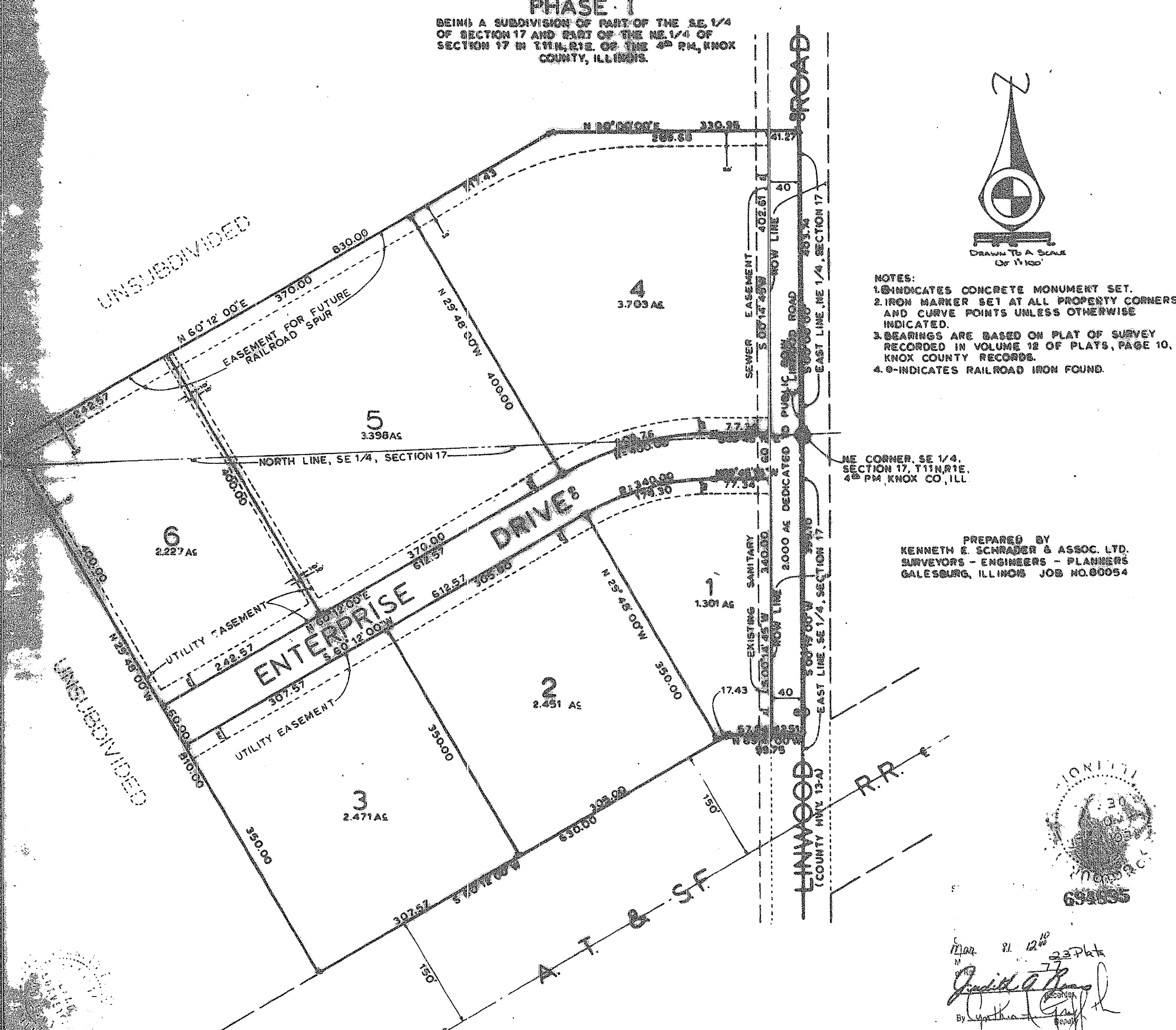


SANTA FE / GALESBURG INDUSTRIAL PARK

PHASE I

BEING A SUBDIVISION OF PART OF THE SE 1/4 OF SECTION 17 AND EAST OF THE NE 1/4 OF SECTION 17 IN T11N, R1E, OF THE 4TH PM, KNOX COUNTY, ILLINOIS.



- NOTES:
- 1-INDICATES CONCRETE MONUMENT SET.
 - 2-IRON MARKER SET AT ALL PROPERTY CORNERS AND CURVE POINTS UNLESS OTHERWISE INDICATED.
 - 3-BEARINGS ARE BASED ON PLAT OF SURVEY RECORDED IN VOLUME 12 OF PLATS, PAGE 10, KNOX COUNTY RECORDS.
 - 4-INDICATES RAILROAD IRON FOUND.

NE CORNER SE 1/4, SECTION 17, T11N, R1E, 4TH PM, KNOX CO, ILL.

PREPARED BY
KENNETH E. SCHRADER & ASSOC. LTD.
SURVEYORS - ENGINEERS - PLANNERS
GALESBURG, ILLINOIS JOB NO. 60004



Handwritten signatures and initials, including 'J.R. Scott' and 'J. E. Lacey'.

STATE OF ILLINOIS)
COUNTY OF KNOX)
I, KENNETH E. SCHRADER AND ASSOCIATES, LTD., DO HEREBY CERTIFY THAT I HAVE SURVEYED AND SUBDIVIDED INTO LOTS AND A STREET, TO BE KNOWN AS SANTA FE / GALESBURG INDUSTRIAL PARK PHASE I, PART OF THE SE 1/4 OF SECTION 17, AND EAST OF THE NE 1/4 OF SECTION 17, T11N, R1E OF THE 4TH PM, KNOX COUNTY, ILLINOIS, AND THAT THE ACCOMPANYING MAP IS A TRUE AND CORRECT REPRESENTATION OF SAID SURVEY AND SUBDIVISION AS SET FORTH AND SHOWN ON SAID MAP FROM CORNERS ONE HUNDRED FEET FROM THE PROPERTY COVERED BY THIS PLAT IS SITUATED WITHIN 500 FEET OF ANY DRAIN OR WATERCOURSE SERVING A TRIBUTARY AREA OF 640 ACRES.

THIS 15th DAY OF JANUARY, A.D., 1981.

KENNETH E. SCHRADER & ASSOCIATES, LTD.
SURVEYORS AND ENGINEERS

By Kenneth E. Schrader
ILLINOIS LAND SURVEYOR #1701

STATE OF ILLINOIS)
COUNTY OF COOK)
SANTA FE LAND IMPROVEMENT COMPANY, A CALIFORNIA CORPORATION, HEREBY CERTIFIES THAT IT IS THE OWNER OF THE PROPERTY DESCRIBED HEREON, AND THAT IT HAS GRANTED SAID PROPERTY TO BE SURVEYED AND SUBDIVIDED AS SHOWN ON THE PLAT HEREON DRAWN FOR THE USES AND PURPOSES THEREIN SET FORTH. IN WITNESS WHEREOF SAID SANTA FE LAND IMPROVEMENT COMPANY HAS CAUSED ITS CORPORATE SEAL TO BE HEREUNTO AFFIXED, AND ITS NAME TO BE SIGNED TO THESE PRESENTS BY ITS PRESIDENT AND SECRETARY THIS 23rd DAY OF FEBRUARY, A.D., 1981.

By J. R. Scott
PRESIDENT

ATTEST:

J. E. Lacey
SECRETARY

STATE OF ILLINOIS)
COUNTY OF COOK)
I, THE UNDERSIGNED, A NOTARY PUBLIC IN AND FOR SAID COUNTY AND STATE AFORESAID, DO HEREBY CERTIFY THAT J. R. Scott PERSONALLY KNOWN TO ME TO BE THE PRESIDENT OF SANTA FE LAND IMPROVEMENT COMPANY, A CALIFORNIA CORPORATION, AND J. E. Lacey PERSONALLY KNOWN TO ME TO BE THE SECRETARY OF SAID CORPORATION, WHOSE NAMES ARE SUBSCRIBED TO THE FOREGOING INSTRUMENT, APPEARED BEFORE ME THIS DAY IN PERSON AND SEVERALLY ACKNOWLEDGED THAT AS SUCH PRESIDENT AND SECRETARY, THEY SIGNED AND DELIVERED THE SAID INSTRUMENT AS PRESIDENT AND SECRETARY OF SAID CORPORATION AND CAUSED THE CORPORATE SEAL OF SAID CORPORATION TO BE AFFIXED THEREON, PURSUANT TO AUTHORITY GIVEN BY THE BY-LAWS OF SAID CORPORATION AND AS THEIR FREE AND VOLUNTARY ACT AND AS THE FREE AND VOLUNTARY ACT AND DEED OF SAID CORPORATION, FOR THE USES AND PURPOSES THEREIN SET FORTH.

GIVEN UNDER MY HAND AND NOTARIAL SEAL THIS 23rd DAY OF FEBRUARY, A.D., 1981.

J. G. Hickey
NOTARY PUBLIC

COUNTY CLERK OF KNOX COUNTY, ILLINOIS, DO HEREBY CERTIFY THAT SAID DELINQUENT GENERAL TAXES, NO UNPAID FORFEITED TAX SALES AGAINST ANY OF THE LAND INCLUDED IN SAID MAP AND SEAL OF THE COUNTY AT GALESBURG, ILLINOIS, A.D., 1981.

COUNTY CLERK James J. Hill
Deputy Edith C. Lawrence

STATE OF ILLINOIS)
COUNTY OF KNOX)
APPROVED BY THE CITY OF GALESBURG PLANNING COMMISSION THIS 24 DAY OF February, A.D., 1981.

Wayne Howard TITLE Chairman

STATE OF ILLINOIS)
COUNTY OF KNOX)
APPROVED BY THE CITY OF GALESBURG THIS 9th DAY OF March, A.D., 1981.

W. E. Wilson TITLE City Clerk